

LED Downlight Square 5 inch

5" Square LED Recessed Downlight Fram & Trim



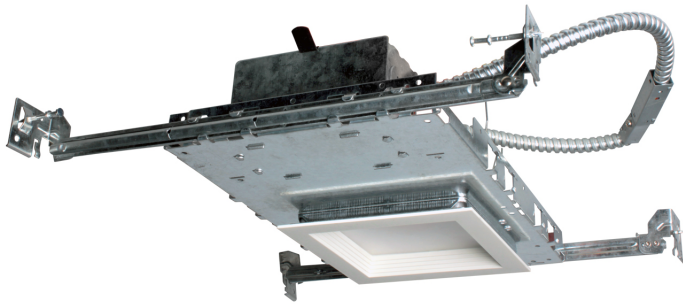
QUICK FEATURES

- IC Rated
- Thermally protected, high efficiency driver standard
- Available at 120V or 120-277V
- Dimmable to 10% with most standard triac or 0-10V dimmers
- cUL classified / ENERGY STAR qualified
- Lifetime of 50,000 hours
- 5 year warranty

PERFORMANCE DATA

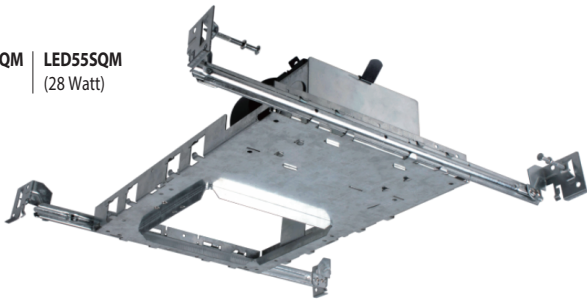
Input Voltage	120V or 120-277V
Frequency	50 / 60Hz
T Ambient	-30°C ~40°C (-22°F ~104°F)

(all values at 25°C without a dimming control in circuit)

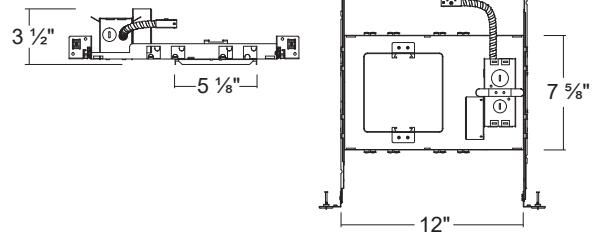


FRAME

MODEL NO.
LED5SQ / LED5SQM (16 Watt) | **LED55SQM** (28 Watt)



Dimension



Features

- Galvanized steel construction plaster frame-in with Junction box captive hanger bar with real nail.
- Contains one 1-1/8", one 5/8", three 7/8" knockouts
- Four plastic Romex cable Trap - Using protect and easily installation of Romex cable
- LED Driver is mounted directly on the frame.
 - 16 Watt : 120V (Triac dimming) or 120-277V (0-10V dimming)
 - 28 Watt : 120-277V (0-10V dimming)

SMOOTH & BAFFLE TRIM

MODEL NO.
LTSQ500 / LTSQ5000
 Square Smooth

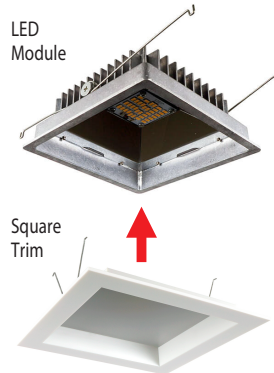


MODEL NO.
LTSQ503 / LTSQ5030
 Square Baffle



LED Module

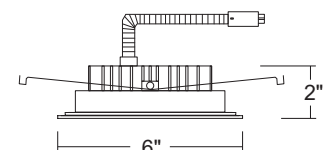
Square Trim



Features

- Metal enclosure protects the ideal connector and it helps them to fix tight.
- Both smooth and Baffle trims can be installed as a replacement for one module.
- Easy installation with ideal connector and Torsion spring.

Dimension



Light Source Test Table

Model NO.	Input Voltage	Watt	CCT	CRI	Lumen
LTSQ500 / LTSQ503	120 V	16 W	3000 K	90	1000 lm
LTSQ500M / LTSQ503M	120-277 V	16 W	3000 K	90	1250 lm
LTSQ5000 / LTSQ5030	120-277 V	28 W	3000 K	90	2000 lm

ADJUSTABLE TRIM

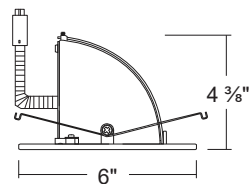
MODEL NO.
LTSQ544 / LTSQ5440
Square Adjustable
Pull Down



Features

- 5 inch Square LED Trim kit with Adjustable pull down trim
- Adjustable gimbal offers 83-degree tilt
- Easy installation with ideal connector and Torsion spring.

Dimension



Light Source Test Table

Model NO.	Input Voltage	Watt	CCT	CRI	Lumen
LTSQ544	120 V	16 W	3000 K	90	1100 lm
LTSQ5440	120-277 V	28 W	3000 K	90	2100 lm

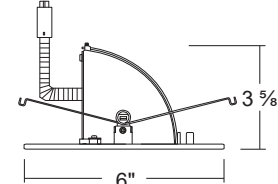
MODEL NO.
LTSQ545 / LTSQ5450
Square Multi-Adjustable
Pull Down



Features

- 5 inch Square LED Trim kit with Multi Adjustable pull down trim
- Adjustable gimbal offers 83-degree tilt and up to 353-degree rotation
- Easy installation with ideal connector and Torsion spring.

Dimension



Light Source Test Table

Model NO.	Input Voltage	Watt	CCT	CRI	Lumen
LTSQ545	120 V	16 W	3000 K	90	1100 lm
LTSQ5450	120-277 V	28 W	3000 K	90	2100 lm

ORDERING INFORMATION

Standard Lumen Ver.

Model No.	Description
LED5SQ	5" LED Square frame / Driver with Flex. Conduit connected to J-Box directly / 2 power wires / No diecast connector / 16W / 120V / Triac Dimming
LTSQ500	5" LED Square Trim / Smooth
LTSQ503	5" LED Square Trim / Baffle
LTSQ544	5" LED Square Trim / Adjustable Pull Down
LTSQ545	5" LED Square Trim / Multi Adjustable Pull Down
LED5SQM	5" LED Square frame / Driver with Flex. Conduit connected to J-Box directly / 2 power wires / No diecast connector / 16W / 120-277V / 0-10V Dimming
LTSQ500M	5" LED Square Trim / Smooth
LTSQ503M	5" LED Square Trim / Baffle

High Lumen Ver.

Model No.	Description
LED55SQM	5" LED Square frame / Driver with Flex. Conduit connected to J-Box directly / 2 power wires / No diecast connector / 28W / 120-277V / 0-10V Dimming
LTSQ5000	5" LED Square Trim / Smooth
LTSQ5030	5" LED Square Trim / Baffle
LTSQ5440	5" LED Square Trim / Adjustable Pull Down
LTSQ5450	5" LED Square Trim / Multi Adjustable Pull Down

DIMMER LIST

List of Triac Dimmer Switch (120V)

Mfr	Model #	Dimming Rate
COOPER	DLC03P	10 - 100%
Leviton	1A1505 / 1C1605	10 - 100%
Leviton	6631 / 6633	10 - 100%
Lutron	CT-603PG / CT-600PR	10 - 100%
Lutron	DV-600PR / DV603PG	10 - 100%
Lutron	DVW-603PGH / DVCL-153P	10 - 100%
Lutron	MACL-153M / TGCL-153P	10 - 100%
Lutron	S-600PR / S-2-LH	10 - 100%

List of 0-10V Dimmer Switch (120-277V)

Mfr	Model #	Dimming Rate
Lutron	NFTV	10 - 100%
Lutron	NTSTV-DV	10 - 100%
Legrand	CD4FBLW	10 - 100%
Leviton	1P710-DL	10 - 100%